

EPINET QUALITATIVE METHODS RESEARCH GROUP

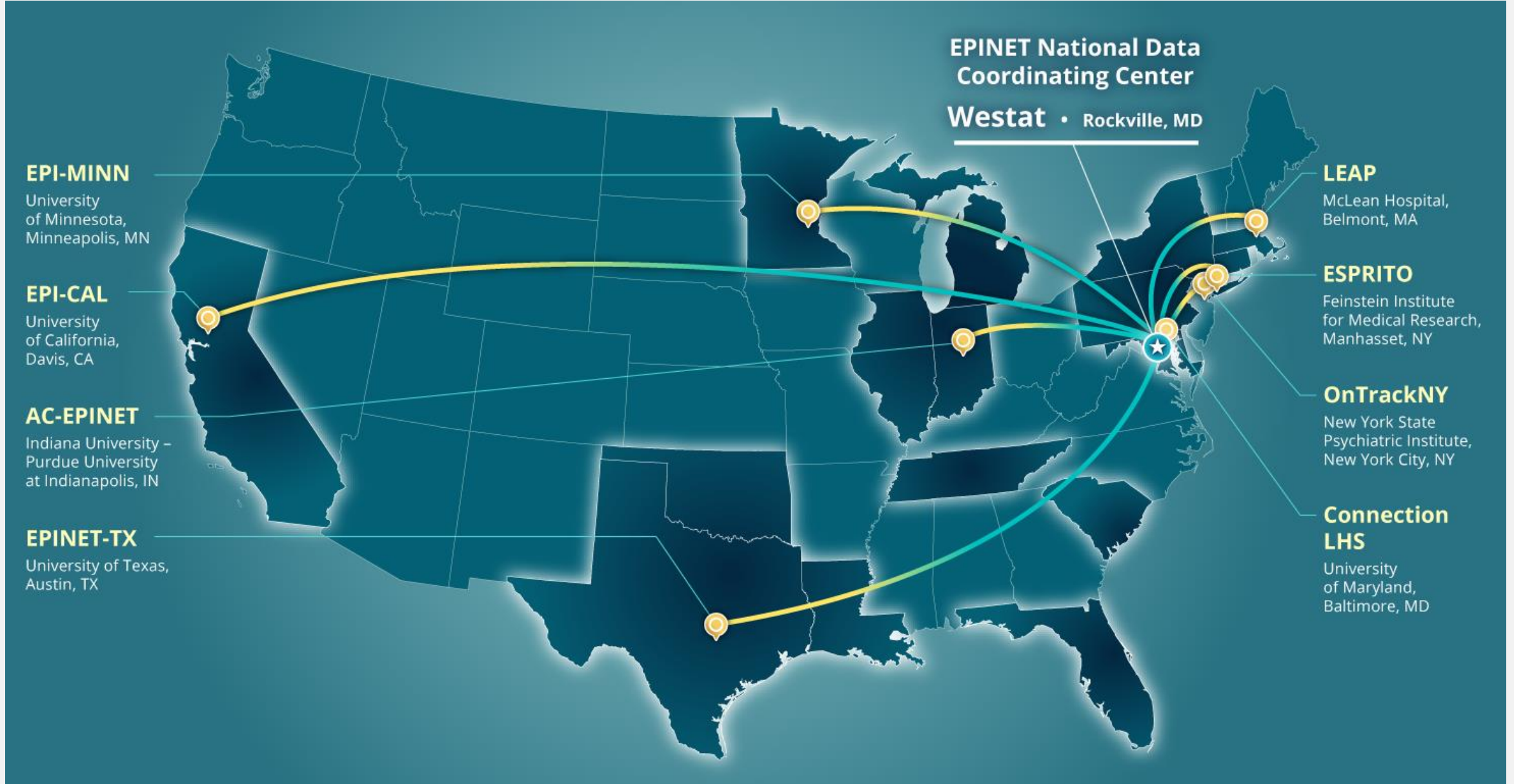
Kick-off Meeting

February 16, 2021

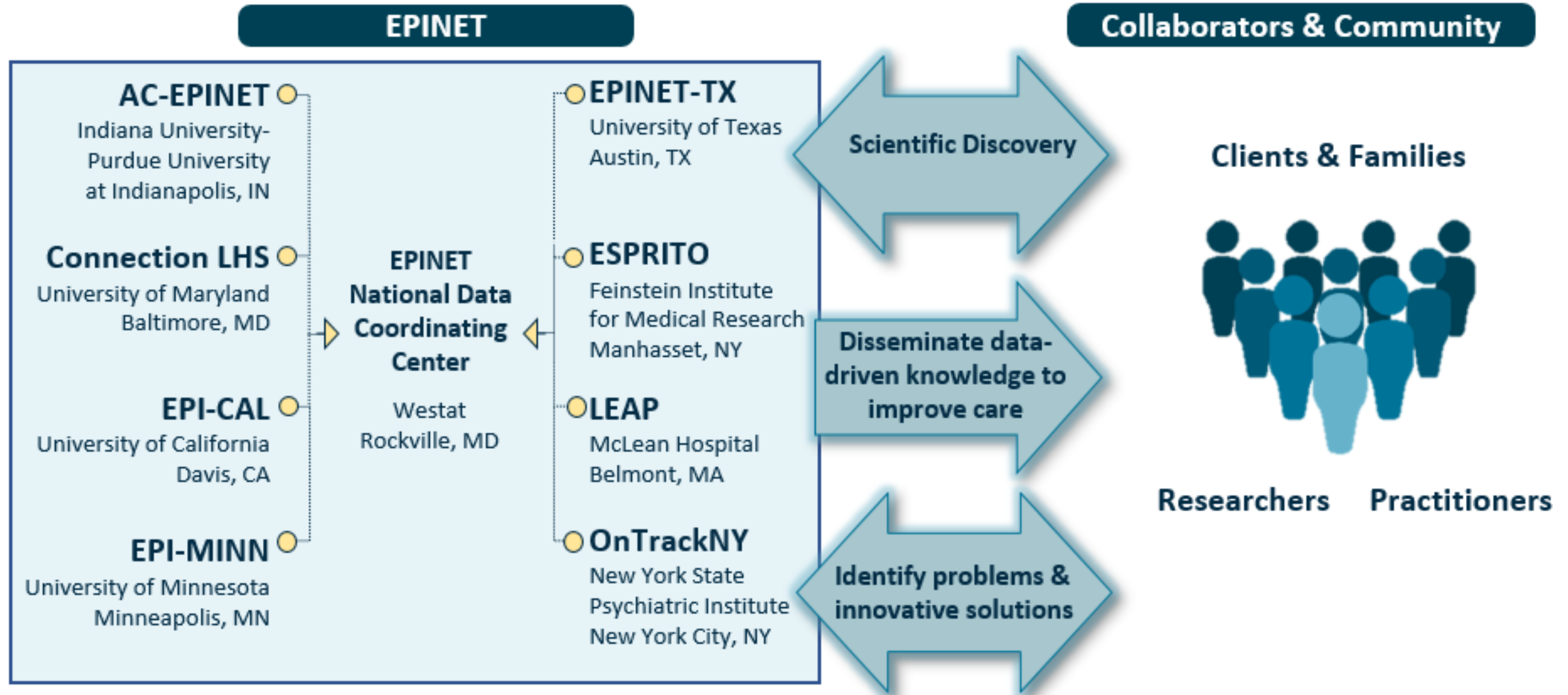
AGENDA

1. Brief introductions
2. Overview of workgroup concept
3. Overview of EPINET
4. Possible future studies
5. Possible current opportunities
6. Grantwriting ideas
7. Brainstorming and next steps
 - a. Any other ideas?
 - b. Anyone to add to the roster?
 - c. Possible future meeting topics

EPINET includes a data coordinating center, 8 hubs, and 101 CSC clinics across 16 states



EPINET is a national learning health care system for early psychosis sponsored by the National Institute of Mental Health



Broad Availability of the CAB, Outside of the EPINET

National EPINET Website

<https://NationalEPINET.org>

The CAB is available on the EPINET website.

Download the full CAB and User's Guide

or

Download individual items and measures
by domain

EPINET
Early Psychosis Intervention Network | Accelerating advances in early psychosis care, recovery outcomes, and scientific discovery through a national early psychosis learning health care partnership

ABOUT | CORE ASSESSMENT BATTERY (CAB) | RESOURCES | CONTACT US

Core Assessment Battery (CAB)

The EPINET Core Assessment Battery (CAB) includes standardized measures and individual items that assess key domains of early psychosis psychopathology, recovery, contextual factors, and treatment. The CAB was developed through a consensus process by the EPINET Steering Committee, which is composed of principal investigators from each of the regional scientific hubs and the EPINET National Data Coordinating Center (ENDCC).

Early Psychosis Intervention Network
Core Assessment Battery

Publication date: July 30, 2020

EPINET CORE ASSESSMENT Battery Baseline (PDF)

EPINET CORE ASSESSMENT Battery Follow-Up (PDF)

User Guide: EPINET Core Assessment Battery (PDF)

Domains Covered in the Core Assessment Battery

Domain name	Items or Measures Within Domain
Cognition	Cognition Items (17DP) CAC App (17DP) PENN CNS (17DP)
Demographics and Background	Demographics and Background Items - Baseline (17DP) Demographics and Background Items - Follow-Up (17DP)
Diagnosis	Diagnosis Items (17DP)
Discharge Planning and Disposition	Discharge Planning and Disposition Items (17DP)
Duration of Untreated Psychosis (DUP) and Pathway to Care	DUP and Pathway to Care Items - Baseline (17DP) DUP and Pathway to Care Items - Follow-up (17DP)

5

Domains In The Core Assessment Battery

	CAB Domain
1	Cognition
2	Demographics & Background
3	Diagnosis
4	Discharge Planning & Disposition
5	DUP & Pathway to Care
6	Education
7	Employment
8	Family Involvement
9	Functioning
10	Health
11	Hospitalizations

	CAB Domain
12	Legal Involvement
13	Medication Side Effects & Treatment Adherence
14	Medications
15	Recovery
16	Service Use
17	Shared Decision Making
18	Stress, Trauma & Adverse Childhood Events
19	Substance Use
20	Suicidality
21	Symptoms

Standardized Measures in the CAB

Domain	Measures
Cognition	<ul style="list-style-type: none"> • Brief Assessment of Cognition (BAC-APP v2.1.0) • Penn Computerized Neurocognitive Battery (PennCNB)
Functioning	<ul style="list-style-type: none"> • Global Functioning Scale: Social rating (GF Social) • Global Functioning Scale: Role rating (GF Role) • MIRECC-GAF Occupational rating • MIRECC-GAF Social rating
Medication Side Effects & Treatment Adherence	<ul style="list-style-type: none"> • Brief Adherence Rating Scale (BARS) • Adherence Estimator • Intent to Attend and Complete
Recovery	<ul style="list-style-type: none"> • Questionnaire about the Process of Recovery (QPR)
Shared Decision Making	<ul style="list-style-type: none"> • CollaboRATE
Stress, Trauma & Adverse Childhood Events	<ul style="list-style-type: none"> • Adverse Childhood Experiences (ACES) • Child and Adolescent Trauma Screen (CATS) Life Events Checklist (LEC) • Post Traumatic Stress Disorder Checklist for DSM-5
Symptoms	<ul style="list-style-type: none"> • Modified Colorado Symptom Index • Brief Psychiatric Rating Scale (BPRS) • Positive and Negative Symptoms of Schizophrenia Scale (PANSS-6)